

Breakthrough Coalition is a network of service providers and others concerned with senior issues, committed to enhancing the quality of life for older adults within the St. Louis metropolitan area through education, advocacy and networking.



BC NEWS



Helping Seniors Since 1991

www.breakthroughcoalition.org

February 2012

Breakthrough Coalition General Membership 2012 Meetings

- Tuesday, February 7
- Tuesday, April 3
- Tuesday, June 5
- Tuesday, August 7
- Tuesday, October 2
- Tuesday, December 4

General Membership Meetings:
Networking starts at 8:00 am;
Meeting starts at 8:30 at the
[Maryland Heights Centre](#).

Breakthrough Coalition Steering Committee 2012 Meetings

- Tuesday, Jan. 3 - 12:00
- Tuesday, Mar. 6 - 8:00am
- Tuesday, May 1 - 12:00
- Tuesday, July 3 - 8:00am
- Tuesday, Sept. 4 - 12:00
- Tuesday, Nov 6 - 8:00am

Steering Committee Meetings start at 12:00 p.m. at the Alzheimer's Association, 9374 Olive Blvd., 63132. Phone 314-432-3422.

Breakthrough Coalition 2012 Officers

*President -
Stefanie Osiek*

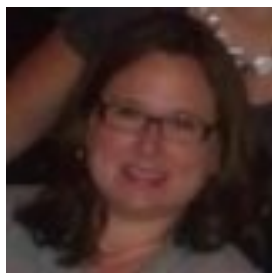
*V.P. / President Elect -
Dennis Cooper*

Secretary - Lori Jurgiel

Treasurer - Donna Emht

*Past President -
Hedva Barenholtz Levy*

Holiday Give Back Program a Success!



Stefanie Osiek

Welcome 2012! Wishing each one of you a year filled with opportunities for fulfillment!

We ended 2011 with a successful and fun networking and cookie exchange. But the big highlight that ended 2011 was YOU! You are to thank for allowing the 1st annual Holiday Give Back program to be more successful than we ever expected. The donations you

brought in to benefit St. Patrick's Center was overwhelming and greatly appreciated. I applaud you!

All members are encouraged to participate in Breakthrough by joining one of our three committees: Advocacy, Education, and Networking. Without YOU, Breakthrough would not be what it is today. Take time after the meeting to place your business card in the basket assigned to the committee you would like to participate in. The Chairperson of the committee will then soon contact you to welcome you to their group.

I look forward to seeing YOU at the general meeting on Tuesday, February

7 at 8:30 a.m. (registration begins at 8:00 a.m.) The topic of this meeting is the Missouri Legislation. I invite you to read the article in this newsletter regarding the meeting.

After the general meeting, job seekers and employers with position opening are invited to meet and exchange information. The goal is to facilitate a match making in the employment arena among our colleagues.

With much gratitude I send you my wishes for good health this new year and hope you will enjoy the opportunities that the Breakthrough Coalition brings you. ■

St. Louis County Stats

St. Louis County is relatively older than both the country and the state of Missouri. According to the 2000 Census, there are about 35 million Americans age 65 and older accounting for almost 13 percent of the population. In Missouri there were 756,038 seniors in 2000, 13.5 percent of the state population.

In St. Louis County, 143,526 persons or 14.1 percent of the

population are age 65 and older. In the county about half (52 percent) of this senior group is under 75, a bit more than a third (36 percent) is between 75 and 84, and bit more than ten percent (12 percent) are 85 years and older.

During the 1990s the population age 65 and older grew twice as fast in the county (10.5 percent) as it did in Missouri over-

all (5.3 percent). This rapid county growth of seniors was due to increases among the oldest cohorts. Those 65 to 74 in the county declined in population between 1990 and 2000. However, those age 75 to 84 increased by nearly 24 percent and those age 85 and older increased by nearly 36 percent. These gains among the county's older seniors were about twice the Missouri rate. ■

Overview of the Missouri General Assembly

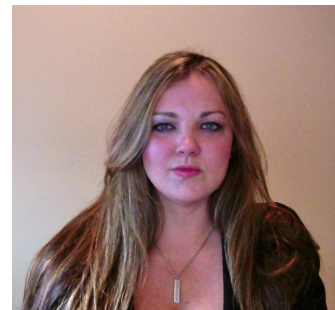
Tuesday, February 7, 2012
8:30am - 10:00

The presentation will include an overview of the Missouri General Assembly and the key pieces of legislation that are likely to pass in the 2012 Legislative Session. This information from Jefferson City will provide attendees with knowledge and resources they can use to achieve their own advocacy goals. The program is targeted for individuals with limited time and resources to keep abreast of legislation that impact their environment and population or who is tasked with a policy agenda.

The techniques that will be discussed will focus on key elements and competencies. The goal of the session is for an individual to emerge with increased confidence and knowledge of advocacy work in Jefferson City and how that knowledge can be used with advocacy efforts on a local level. ■

Anne Clouse graduated from William Woods University in Fulton, Missouri with a Bachelor of Science degree in Marketing. Upon graduation, Anne spent several years working throughout the country as a specialty sales representative in the medical indus-

try. Anne joined Penman & Winton Consulting in January 2007 working in the Capitol supporting clients by lobbying and monitoring legislation as well as handling legislative communications.



Anne Clouse

BC Committee Information

Steering Committee / Chair – Stefanie Osiek

For more information contact Stefanie Osiek at 314-993-2273 or Sosiek@rescare.com

- Provides organizational structure, fiscal responsibility, oversight, management, accountability, adherence to bylaws and governance to Breakthrough Coalition
- Assures annual review of reports & quality assurance measures
- Reviews endorsement of projects, products, and grant opportunities
- Consists of standing committees listed below and convenes ad hoc committees as needed
- Members consist of Breakthrough Coalition officers, committee chairpersons, members at large & representatives from key senior organizations

Education Committee / Co-Chairs – Lila Shepley and Patty Gramki

For more information contact Lila at 314-516-5421 / lila@homesweethomestl.com or Patty at 314-615-4018 / pgramke@stlouisco.com

- Supports professional development of Breakthrough membership
- Plans, coordinates and supports periodic educational sessions & materials with input from membership and steering committee
- Explores continuing education credit opportunities
- Conducts environmental scans to identify timely and relevant topics for membership education
- Recommends ad hoc committees / issues of focus

Advocacy Committee / Chair – Mark Michelson

For more information contact Mark Michelson at 314-414-1400 or Mark@pscstl.com

- Monitors & tracks legislation / policy issues affecting seniors
- Provides members with tools to advocate for clients
- Provides Breakthrough membership with legislative updates / policy action alerts when appropriate
- Recommends ad hoc committees / issues of focus

Networking Committee / Co-Chairs – Bonnie Laiderman and Lori Jurgiel

For more information contact Bonnie at 314-514-2444 / bonnie@veteranshomecare.com or Lori at 636-485-5147 / lori-jurgiel@gmail.com

- Supports membership development of organization
- Maintains tools for membership communication such as website, list serve, membership database, newsletter and new member packets
- Identifies strategic partnerships to support purpose of Breakthrough Coalition (i.e. Gateway Grandparents, MAC, Resource Guide, etc.)